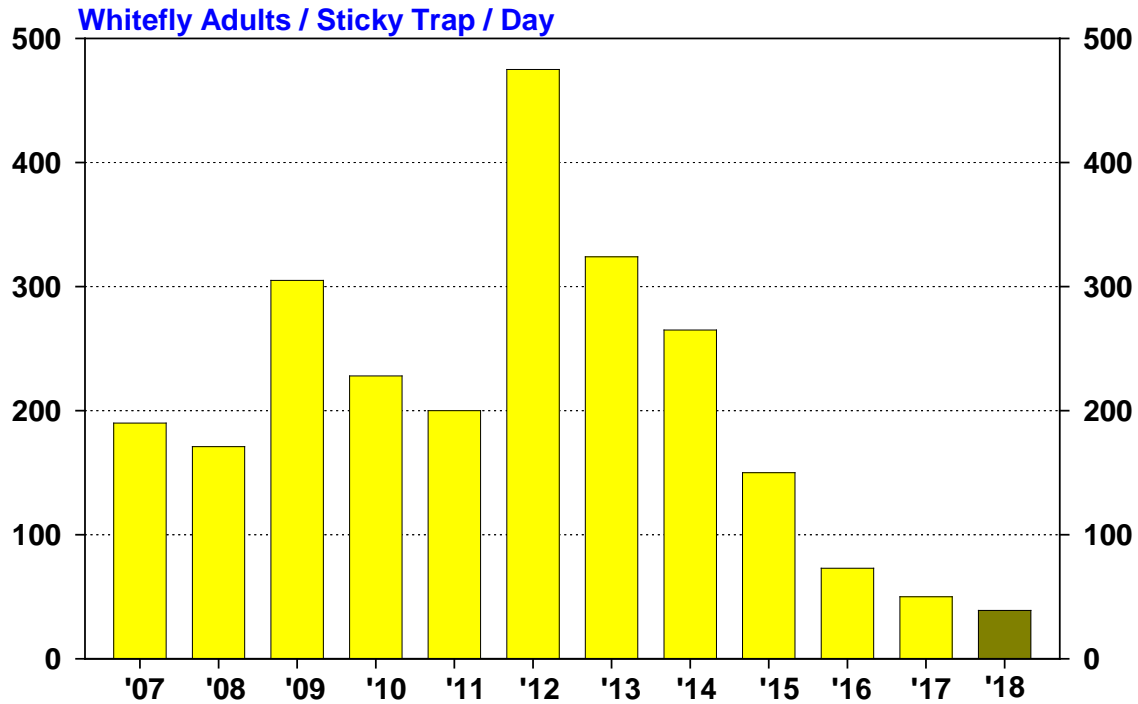
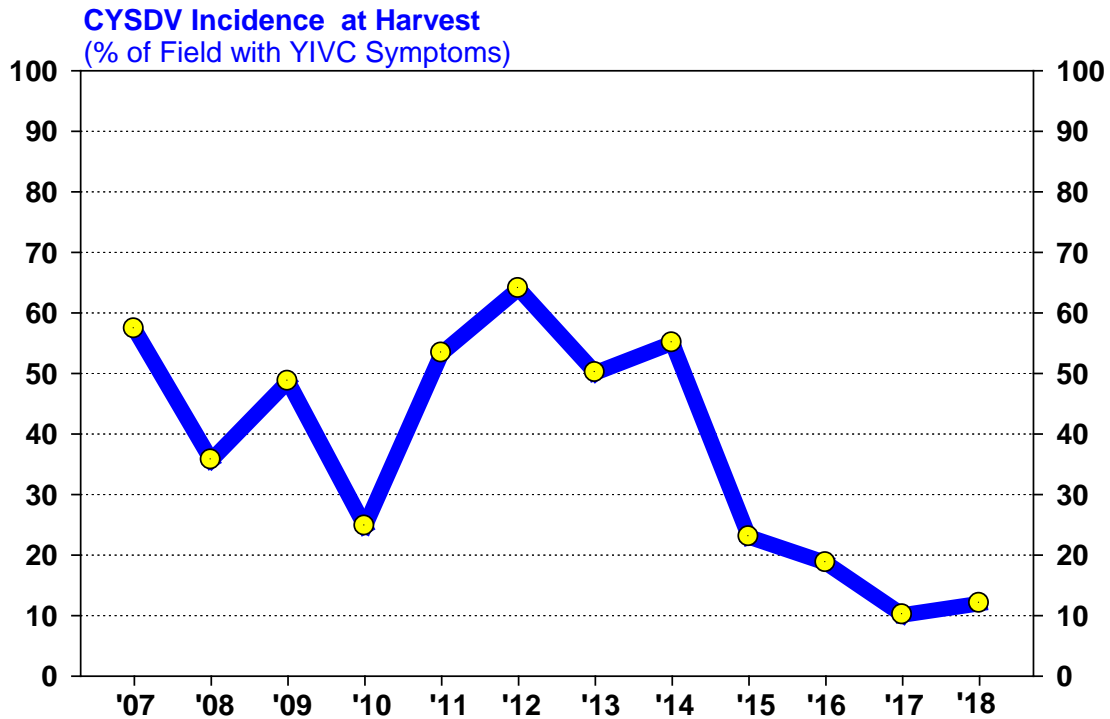


## Whitefly Abundance on Yellow Sticky Traps in Commercial Fall Melon Fields Wellton, Tacna, Roll, and Texas Hill (Aug – Oct) 2007-2018

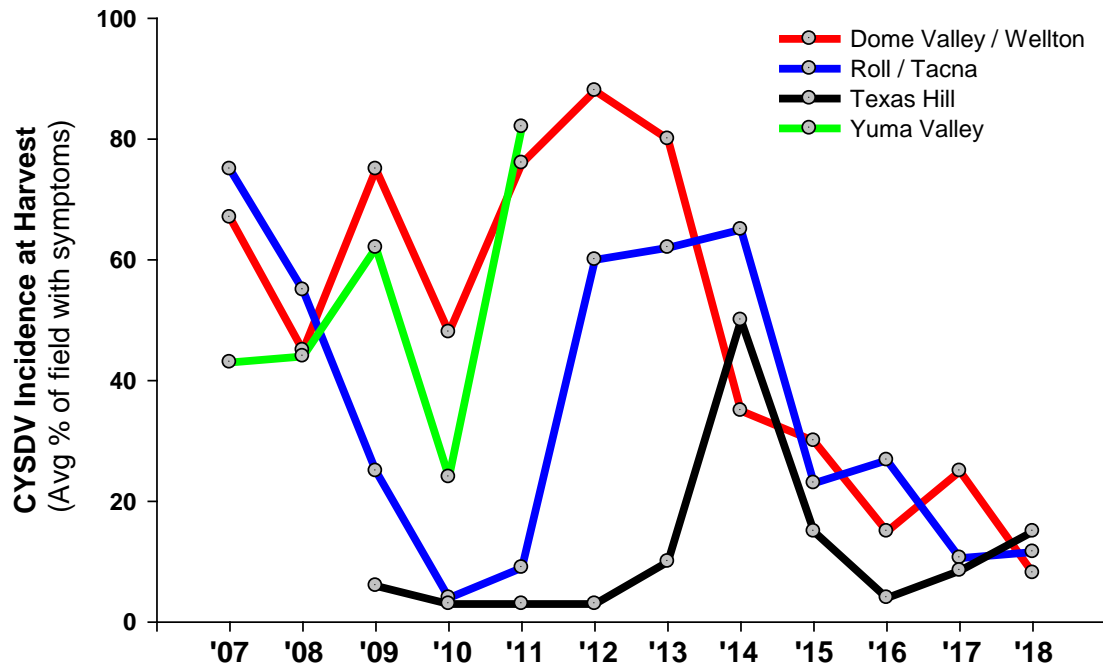


## Areawide CYSDV Incidence in Commercial Fall Melon Fields at Harvest Dome Valley / Wellton, Tacna/ Roll, Texas Hill and Yuma Valley, 2007-2018



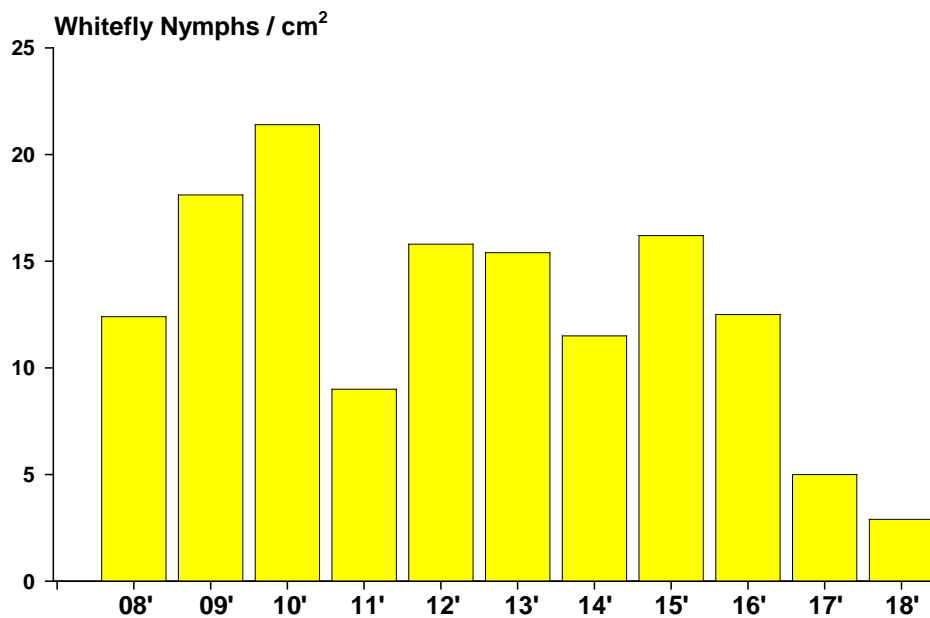
## CYSDV Incidence in Commercial Fall Melon Fields at Harvest

Dome Valley / Wellton, Tacna/ Roll, Texas Hill, and Yuma Valley, 2007-2018

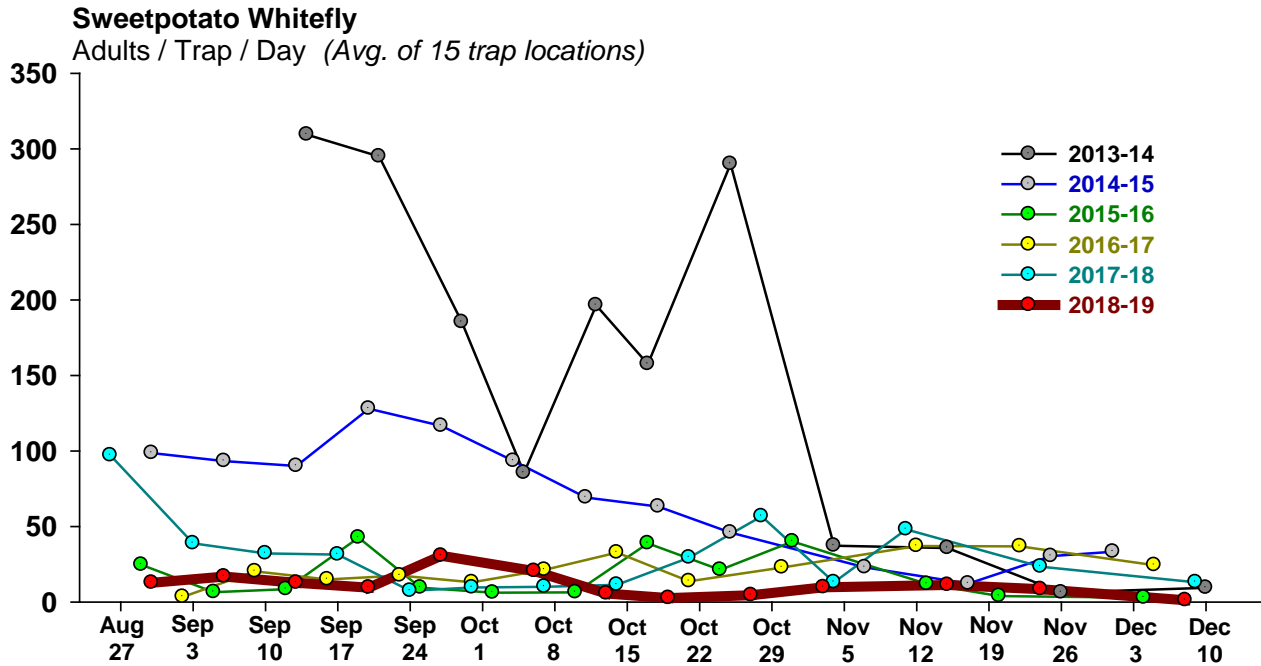


## Sweetpotato Whitefly Nymph Abundance in Non-Treated Cole Crops

UA Yuma Ag Center, Sept- Nov, 2008-2018

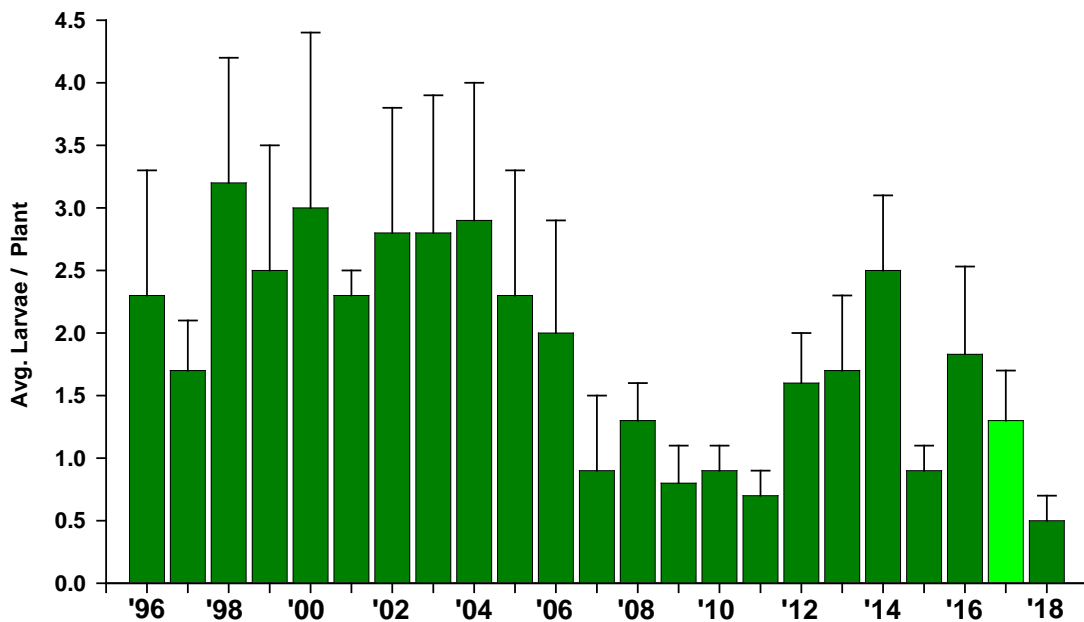


## Areawide Whitefly Adult Abundance from Sticky Trap Captures 2013-2018

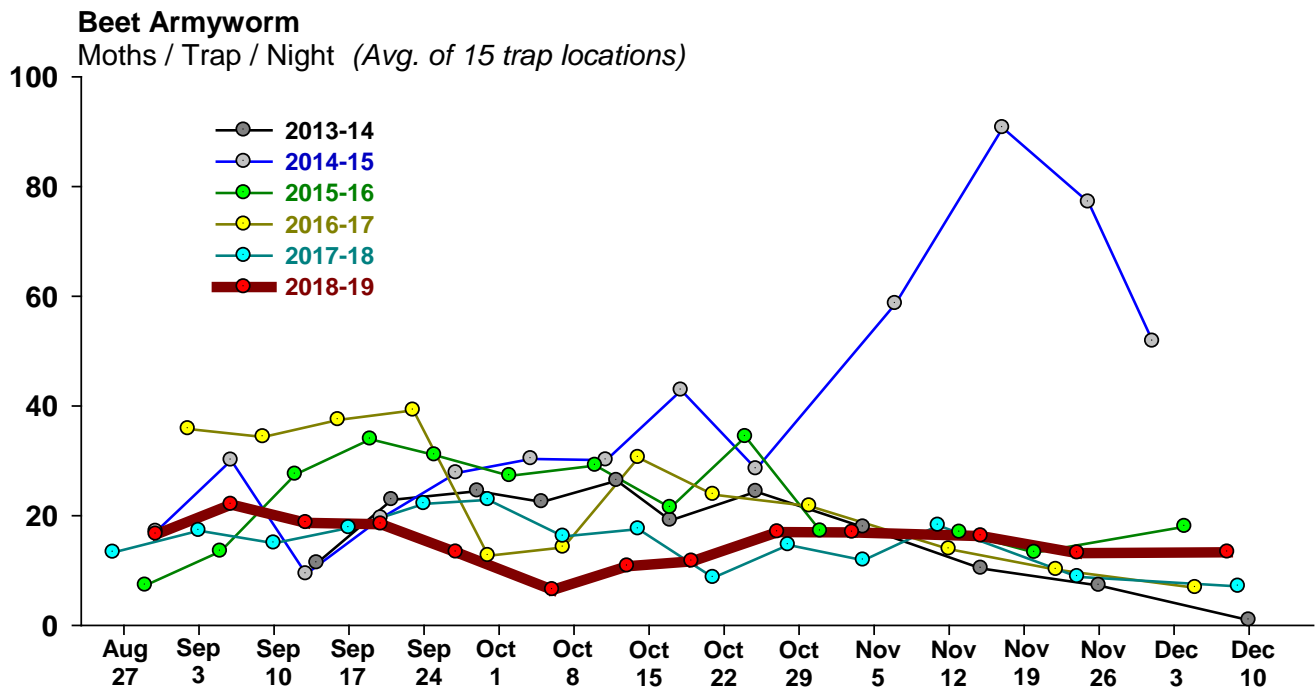
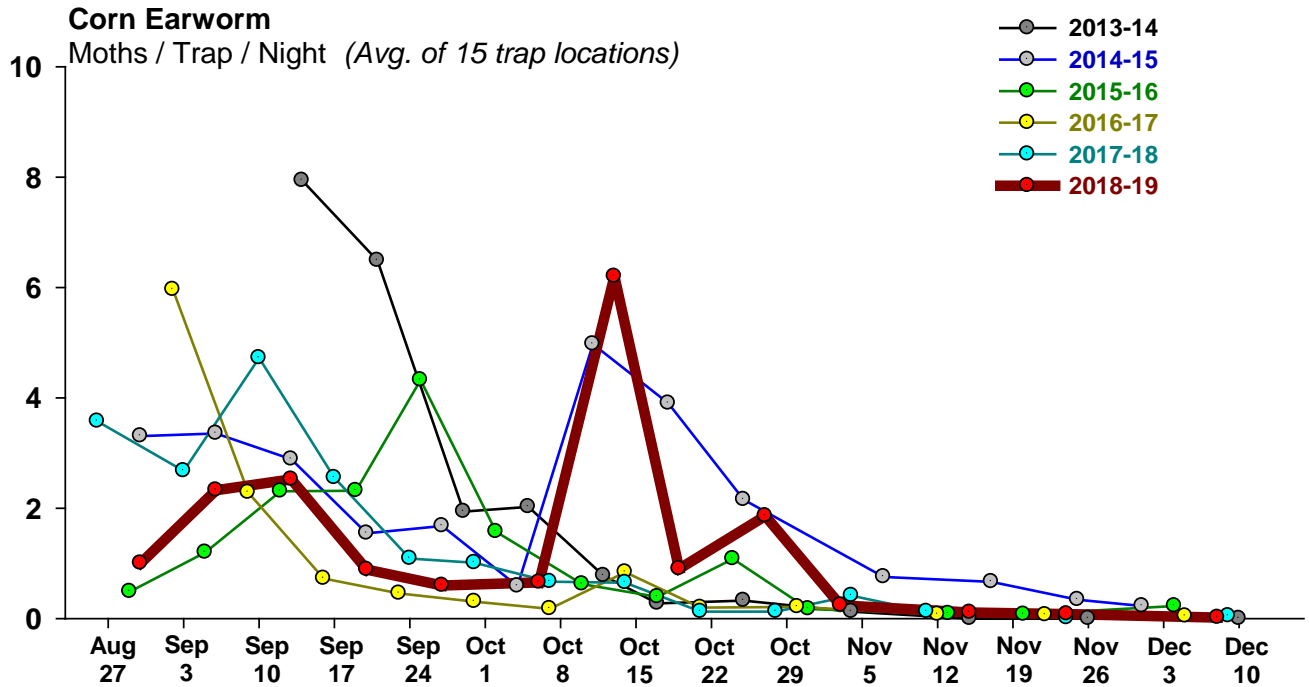


## Beet Armyworm, Cabbage Looper and Corn Earworm Abundance in Non-Treated Lettuce

UA Yuma Ag Center, Sept- Nov, 1996-2018

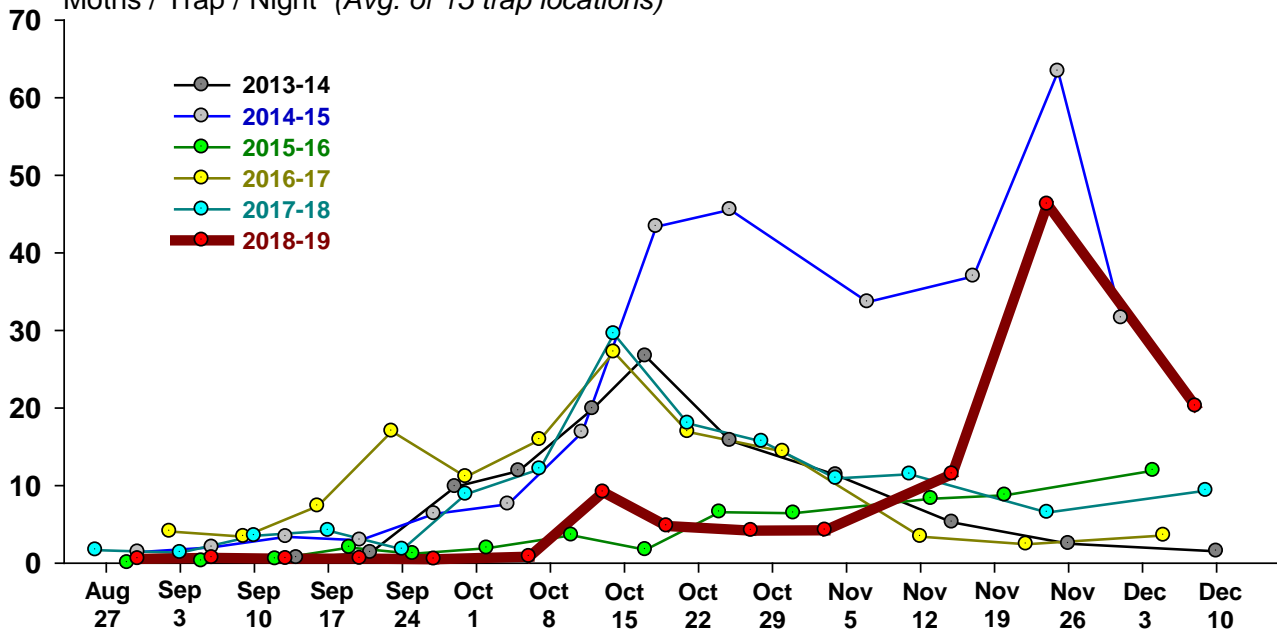


## Areawide Moth Abundance from Pheromone Trap Captures 2013-2018



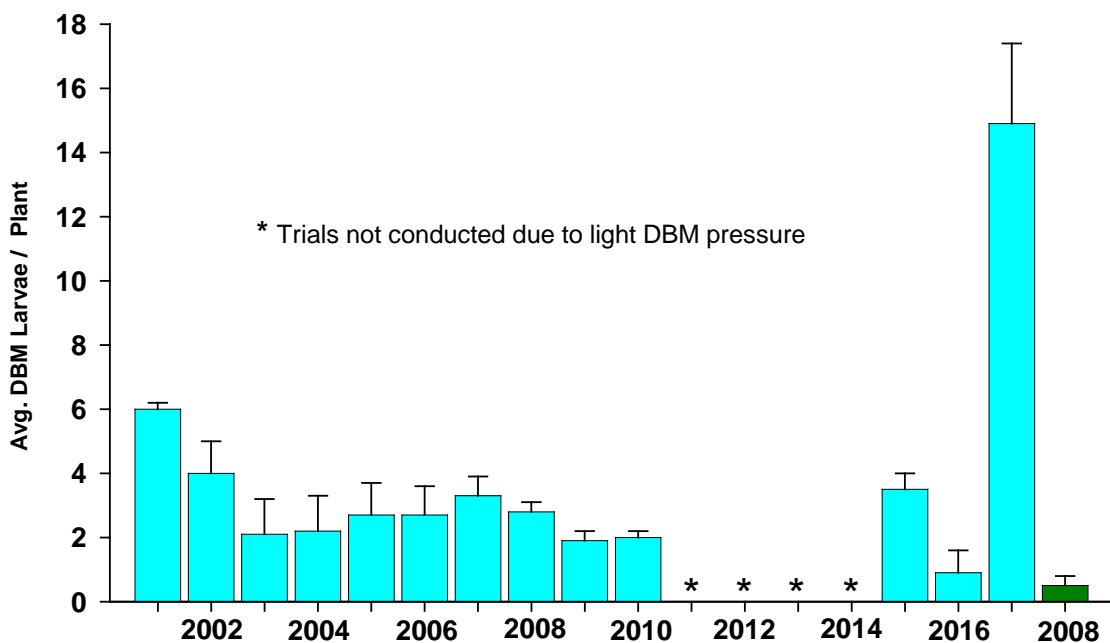
### Cabbage Looper

Moths / Trap / Night (Avg. of 15 trap locations)



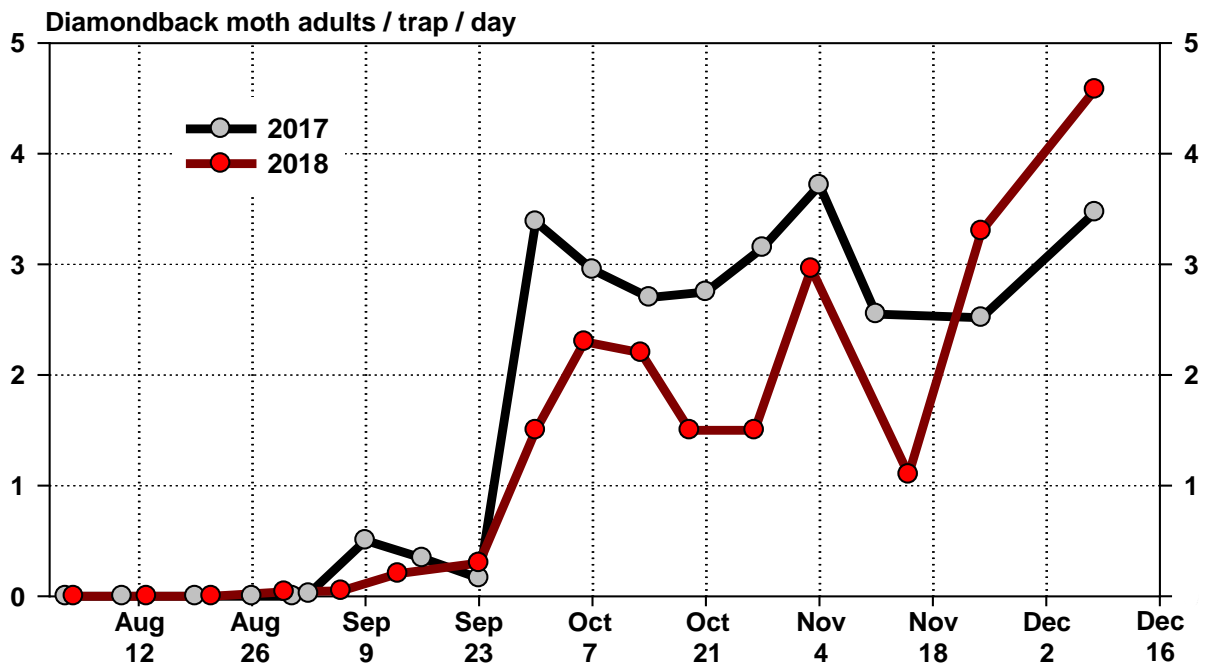
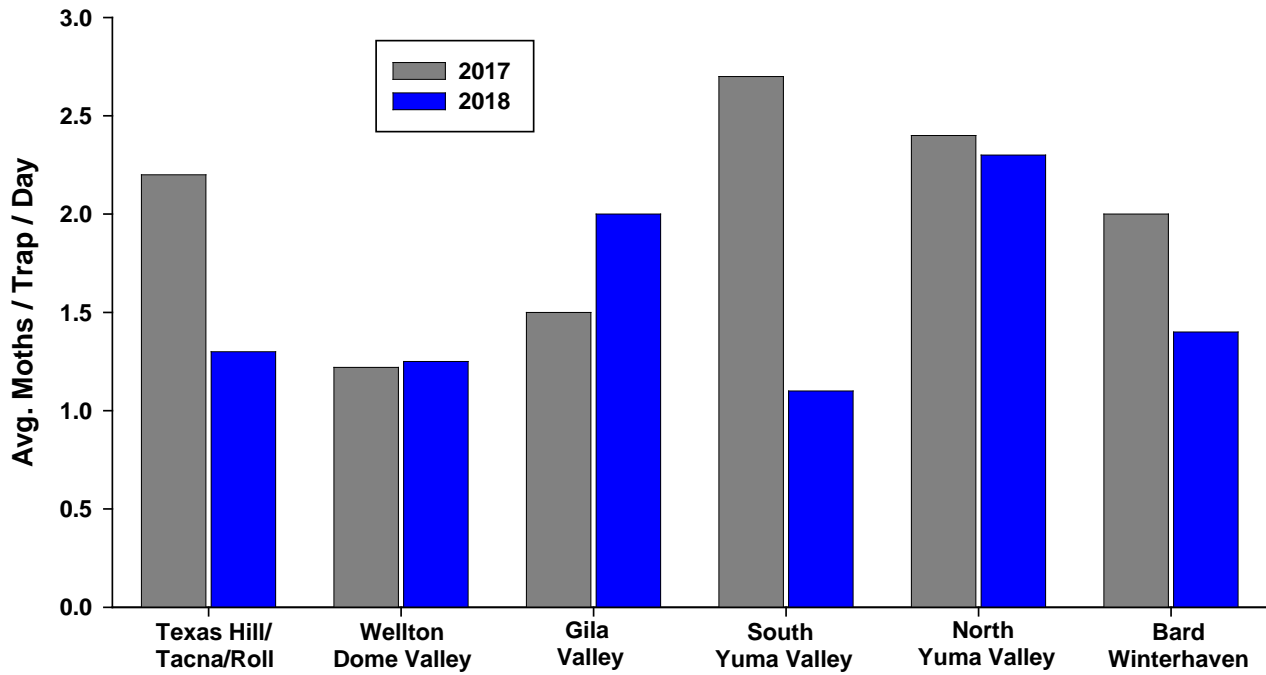
### Diamondback Moth Larvae Abundance on Non-Treated Cole Crops

UA Yuma Ag Center, 2001-2018

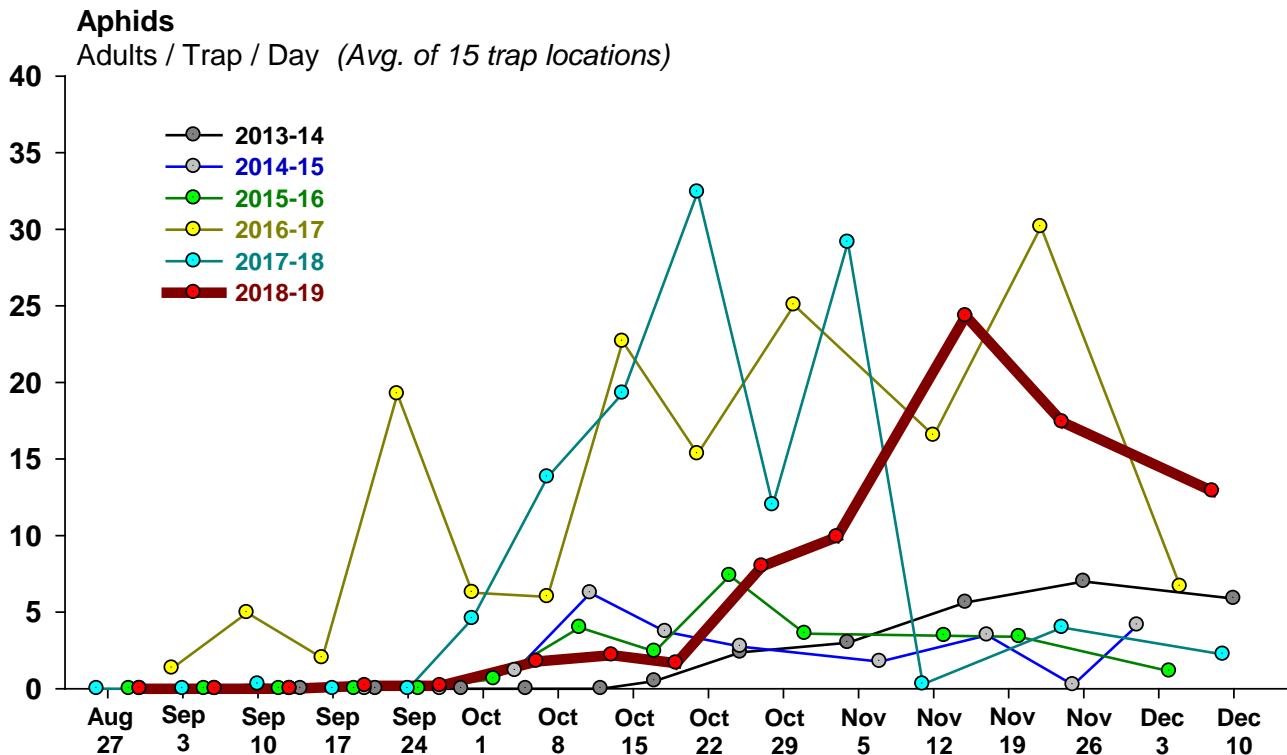


## Areawide Diamondback Moth Adult Activity in Pheromone Traps

Sep 1- Dec 1

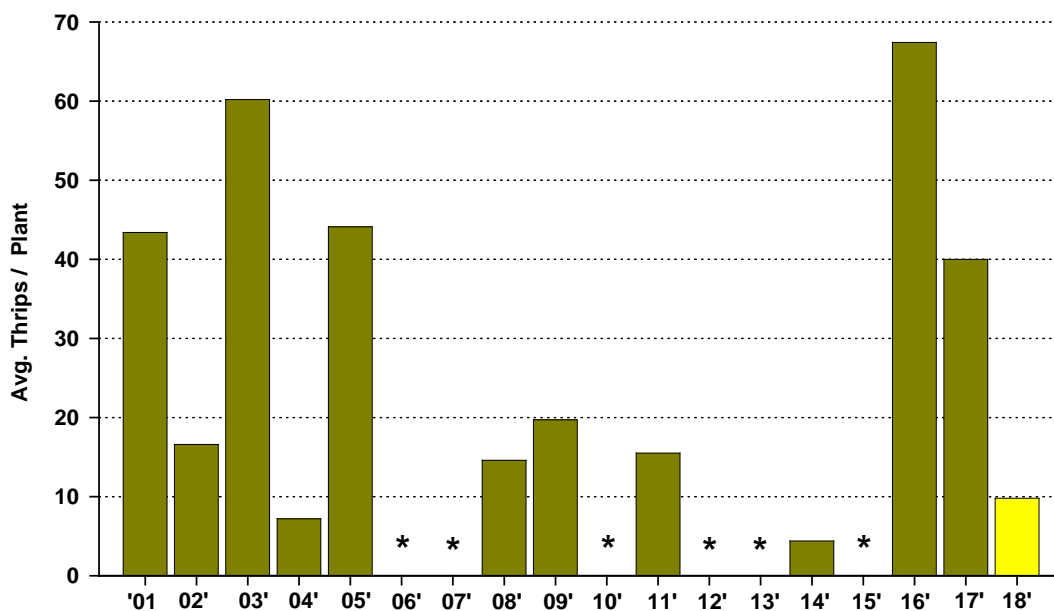


### Areawide Fall Aphid Immigration, Yuma County, 2013-2018



### Western Flower Thrips Abundance on Non-treated Fall Lettuce (Oct-Nov)

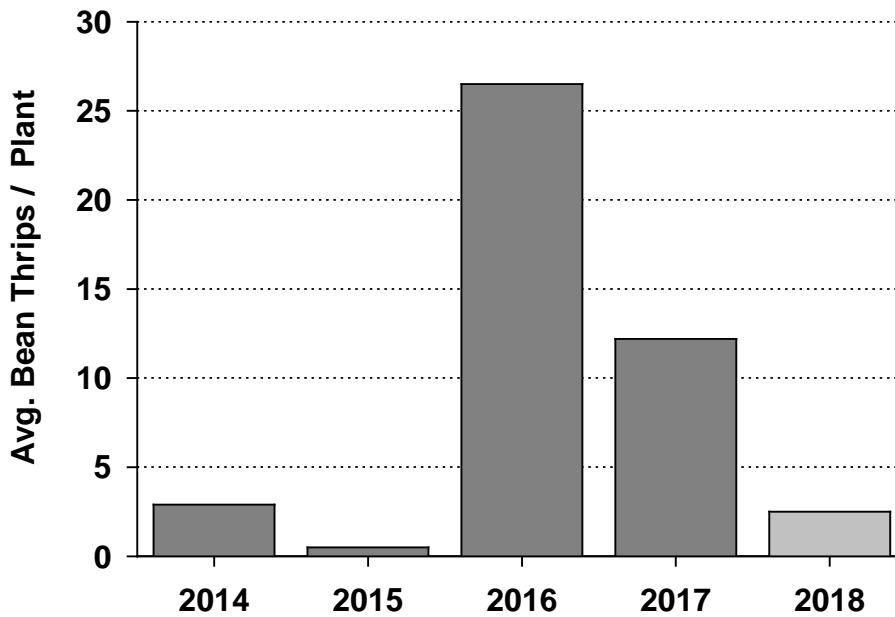
UA - Yuma Ag Center, 2001-2018



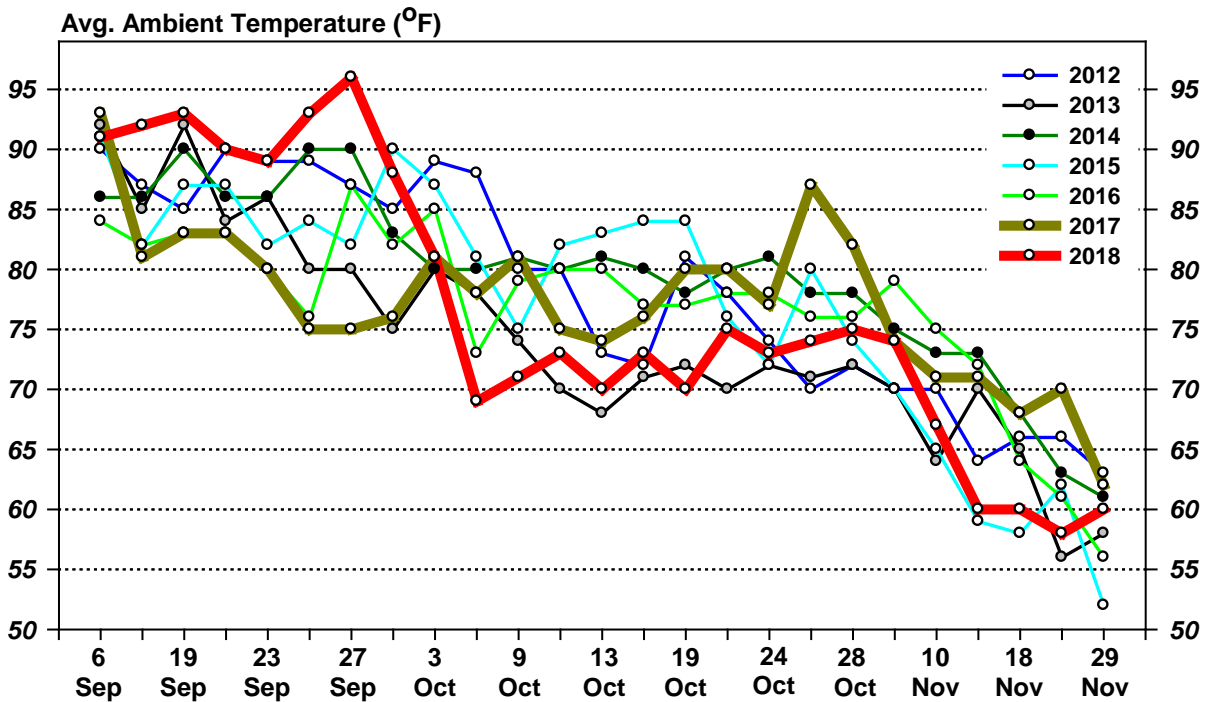
\* Trials not conducted due to light thrips pressure

## Bean Thrips Abundance on Untreated Fall Lettuce (Oct-Nov)

UA - Yuma Ag Center, 2014-2018

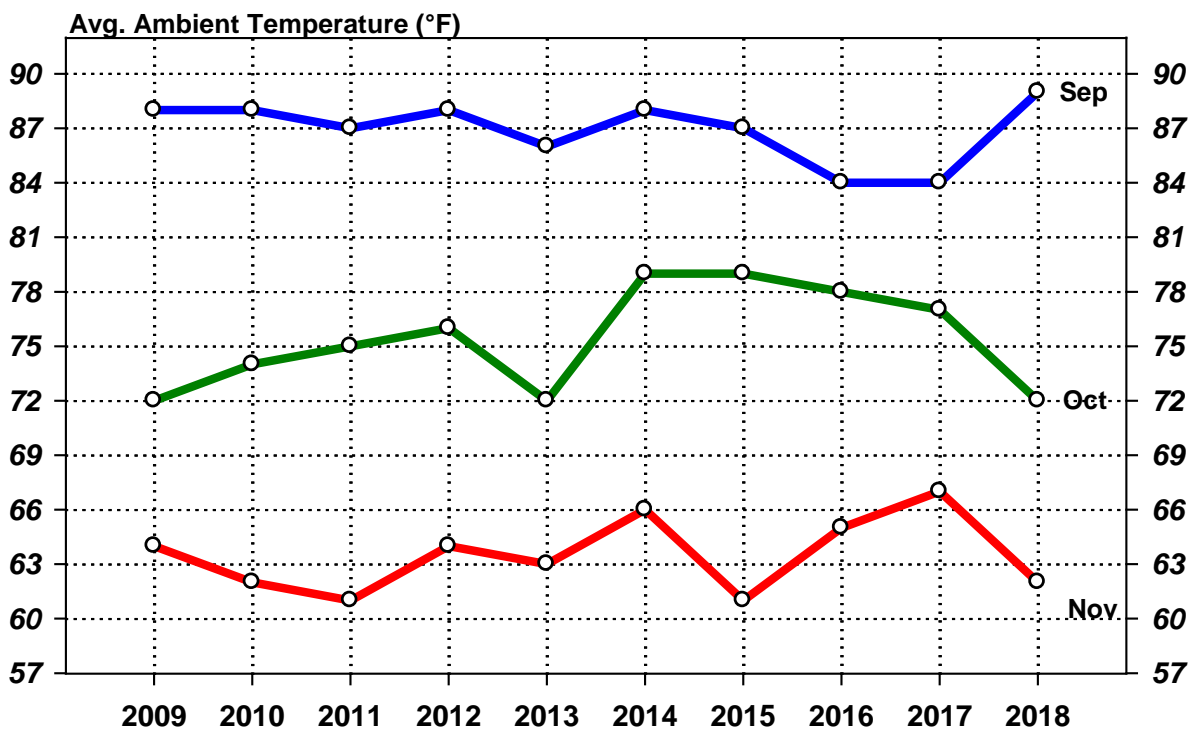


## Fall Trends in Average Weekly Temperatures - Yuma Valley





### Ten Year Trend in Average Monthly Temperatures - Yuma Valley



### Ten Year Trend in Average Rainfall - Yuma Valley

