

# Areawide Insect Trapping Network



COLLEGE OF AGRICULTURE  
AND LIFE SCIENCES  
COOPERATIVE EXTENSION  
Yuma Agricultural Center

John C. Palumbo, Dept of Entomology

The project is designed to measure the activity and movement of adult populations of several key pests. The project is being funded by the *Arizona Iceberg Lettuce Research Council* and will hopefully provide an indication of when pest activity (e.g., corn earworm moth flights) is increasing based on pheromone / sticky trap captures.

The data is not intended to indicate field infestations, as trap data is largely a reflection of adult movement. If nothing else, the data may make PCAs aware of increased pest activity in some areas and encourage intensified scouting in susceptible produce fields.

The pests being monitored include corn earworm, beet armyworm, cabbage looper using pheromone traps; aphids, thrips, leafminers and whiteflies using yellow sticky traps. Traps are checked weekly and data is available in the bi-weekly Veg IPM updates. If a PCA or grower is interested in weekly counts, those can be made available by contacting us. A total of 16 trapping locations have been established in the following areas (approximate location):

## Trap Locations

---

<b>1</b>	<b>Tacna</b>	<b>47E and Co. 2 St.</b>
<b>2</b>	<b>Roll</b>	<b>39E and Co. 4 St.</b>
<b>3</b>	<b>Roll/Wellton</b>	<b>32E and Co. 8 St.</b>
<b>4</b>	<b>Wellton</b>	<b>27E and Co. 10 St.</b>
<b>5</b>	<b>Dome Valley</b>	<b>21E and Co. 8 St.</b>
<b>6</b>	<b>Dome Valley</b>	<b>15E and Co. 3 St.</b>
<b>7</b>	<b>East Gila Valley</b>	<b>10E and Hwy 95</b>
<b>8</b>	<b>North Gila Valley</b>	<b>Laguna Dam Rd / Co. 3 St</b>
<b>9</b>	<b>South Gila Valley</b>	<b>5E and Hwy 95</b>
<b>10</b>	<b>Yuma Valley</b>	<b>Co. 14 and Ave D</b>
<b>11</b>	<b>Yuma Valley</b>	<b>Co. 20 and Ave G</b>
<b>12</b>	<b>Yuma Valley</b>	<b>Co. 17 and Ave J</b>
<b>13</b>	<b>Yuma Valley</b>	<b>Co. 19 and Ave D</b>
<b>14</b>	<b>Yuma Valley</b>	<b>Co. 12 and Ave F</b>
<b>15</b>	<b>Yuma Valley</b>	<b>Co. 8 and Ave E</b>

---

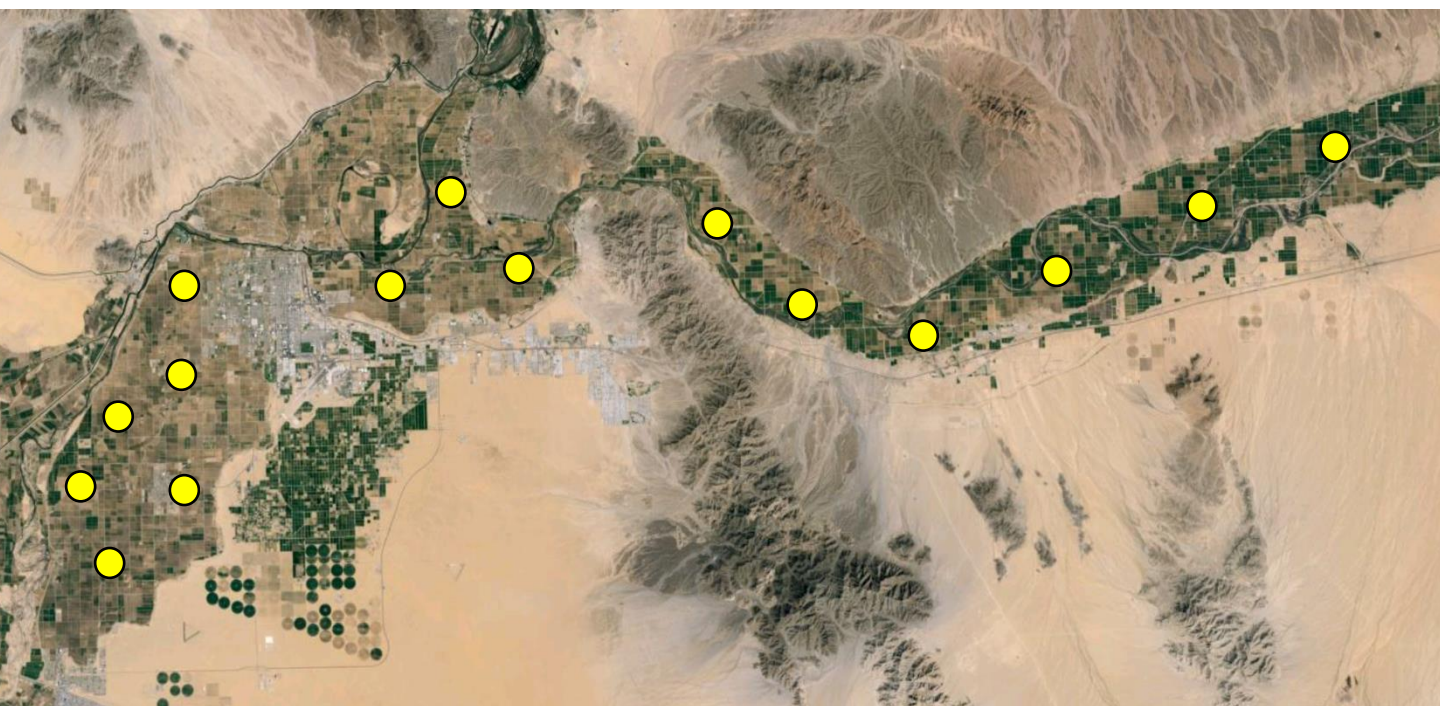
# Area-wide Insect Trapping Network

North Gila Valley

Corn earworm

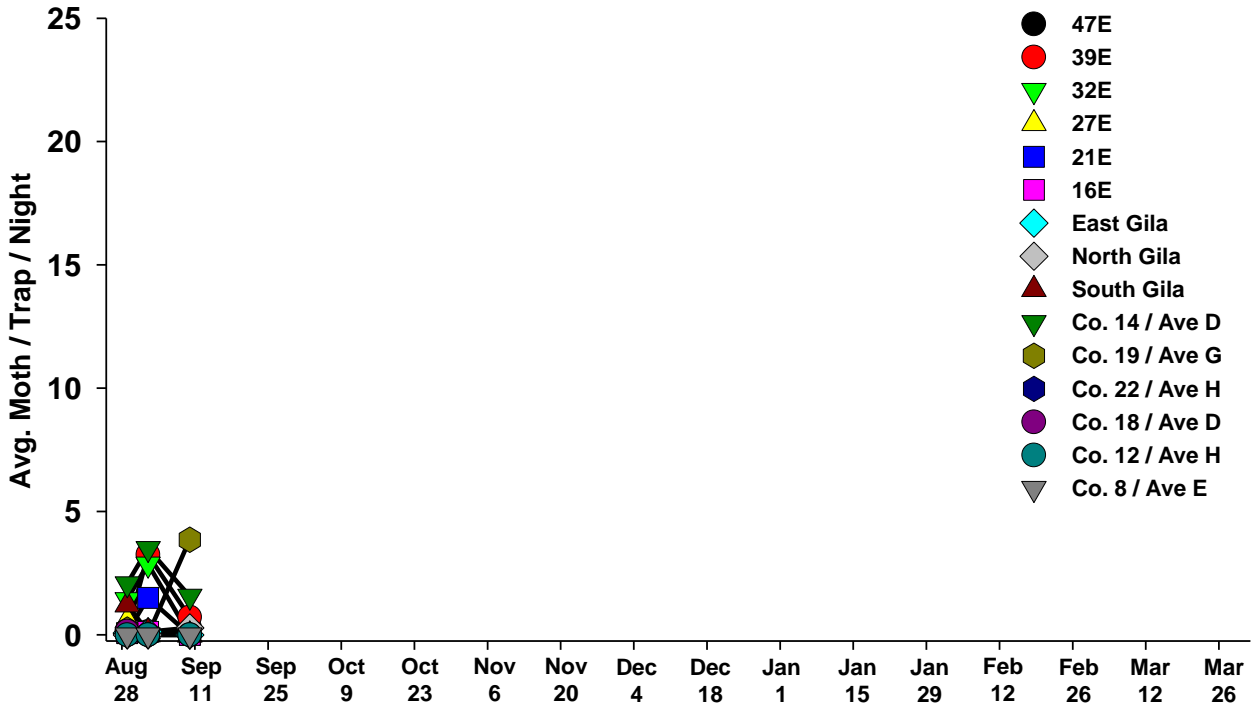
Whiteflies  
Aphids  
Thrips  
Leafminers

Beet armyworm  
Cabbage looper



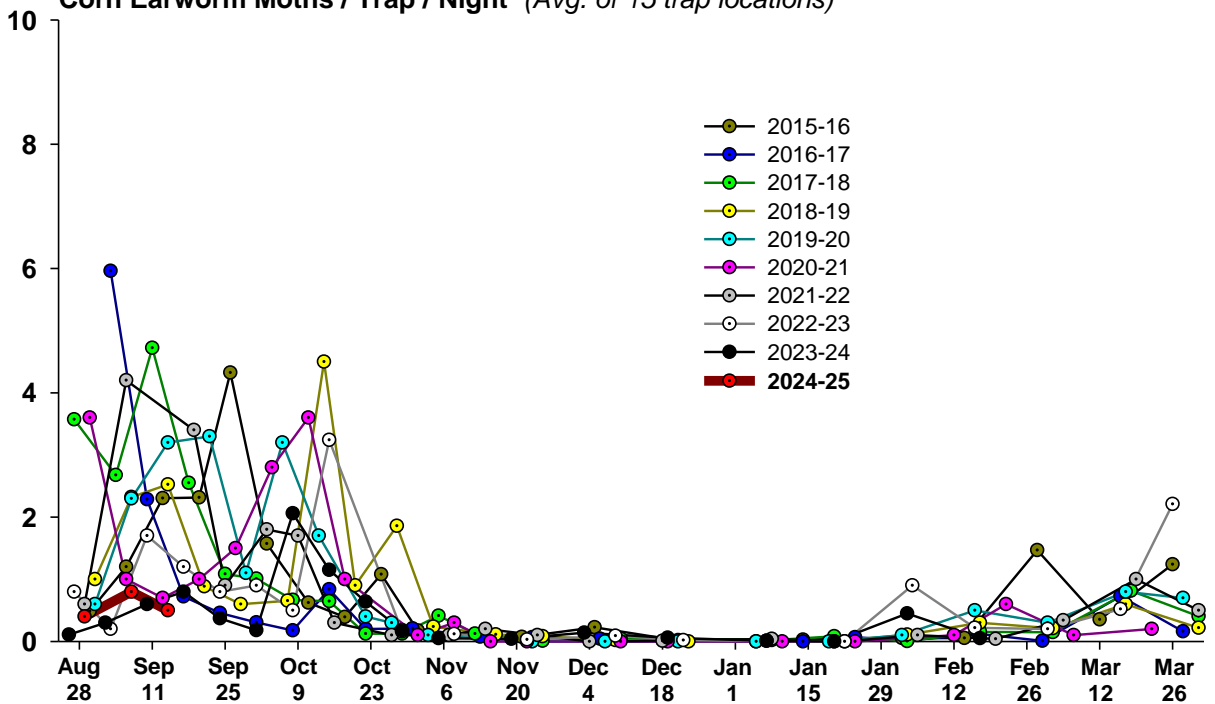
# 2023-2024

## Corn Earworm



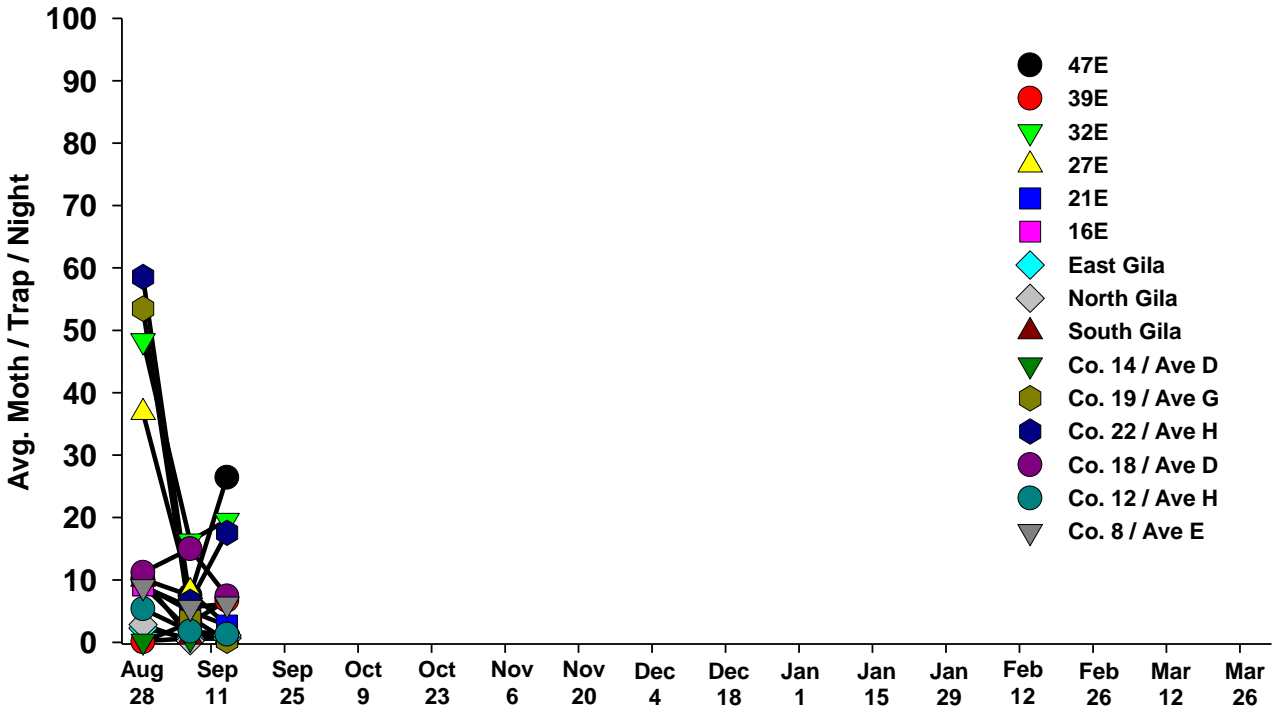
## 10 Year Average

Corn Earworm Moths / Trap / Night (Avg. of 15 trap locations)



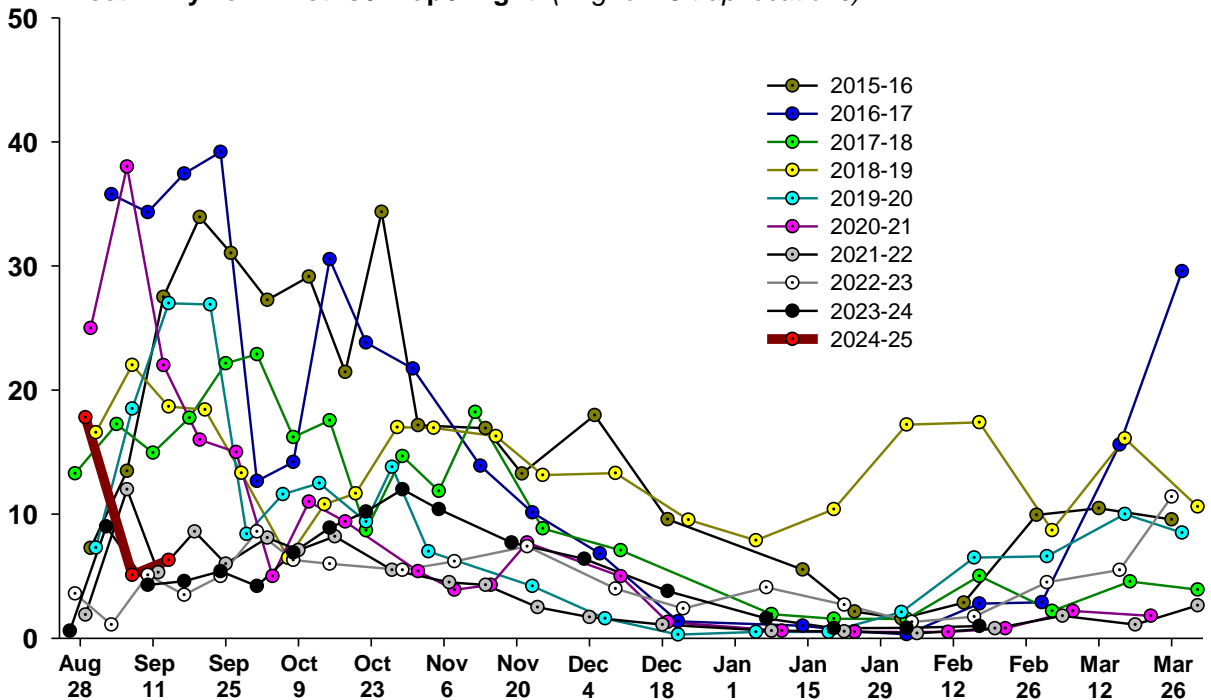
# 2023-2024

## Beet Armyworm



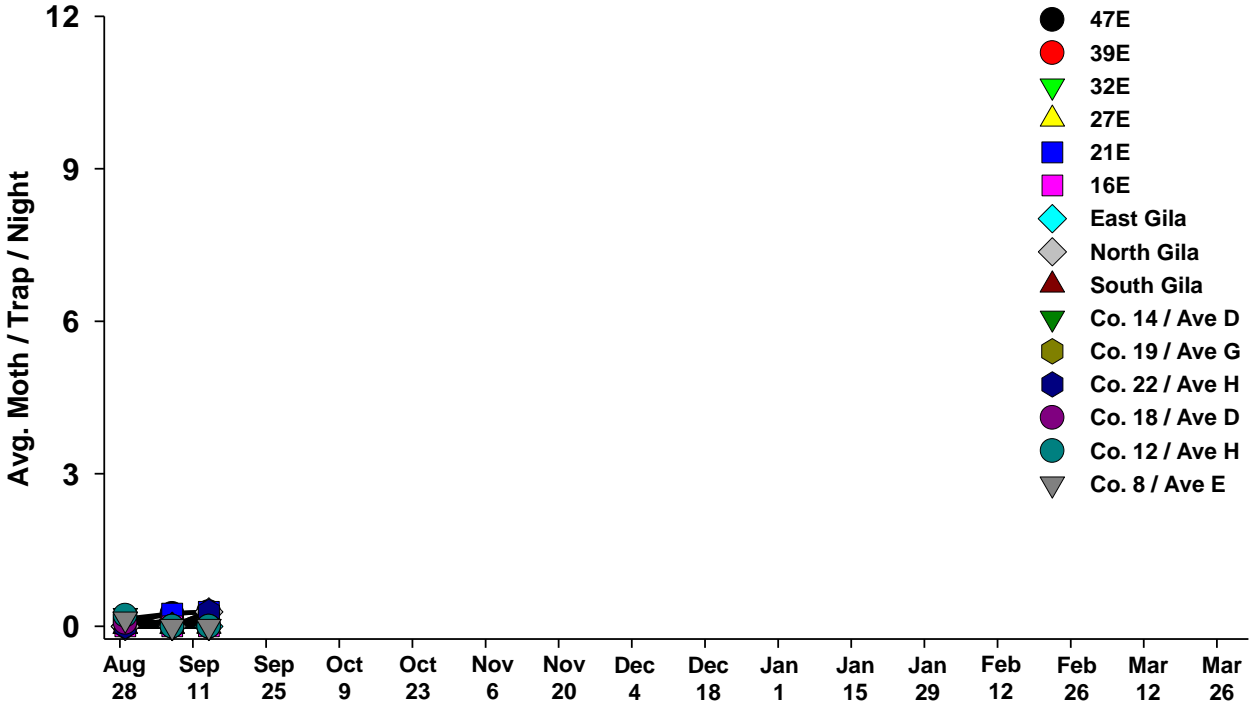
## 10 Year Average

Beet Armyworm Moths / Trap / Night (Avg. of 15 trap locations)



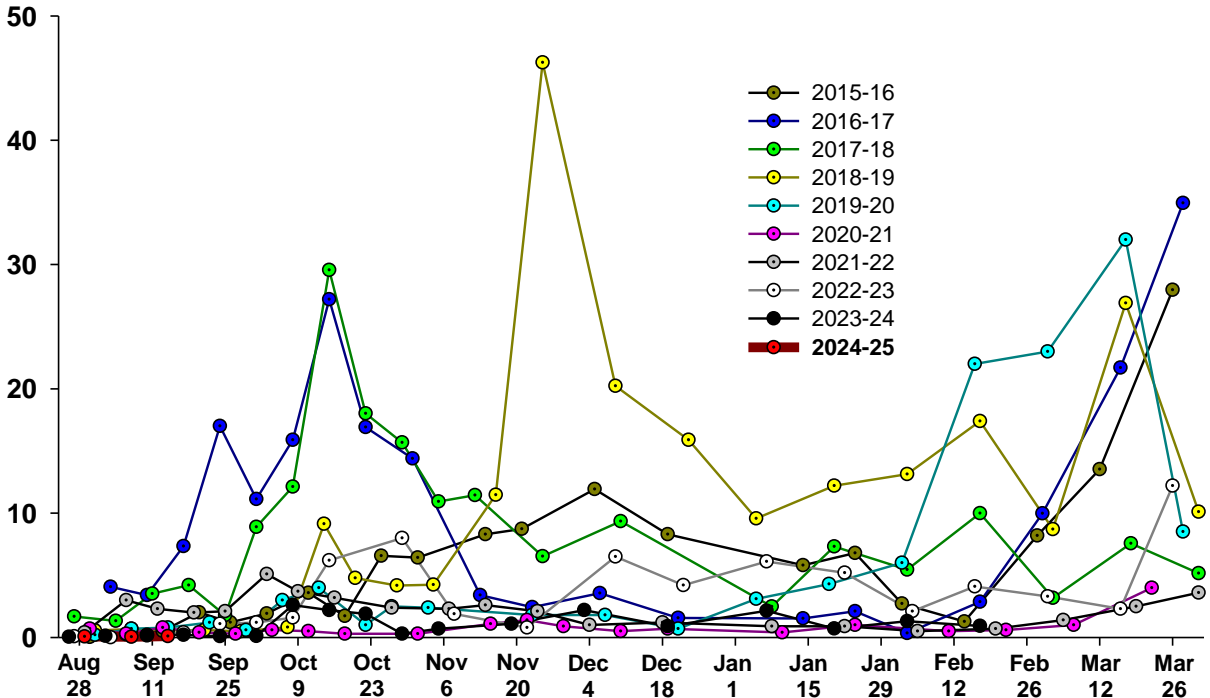
# 2023-2024

## Cabbage Looper



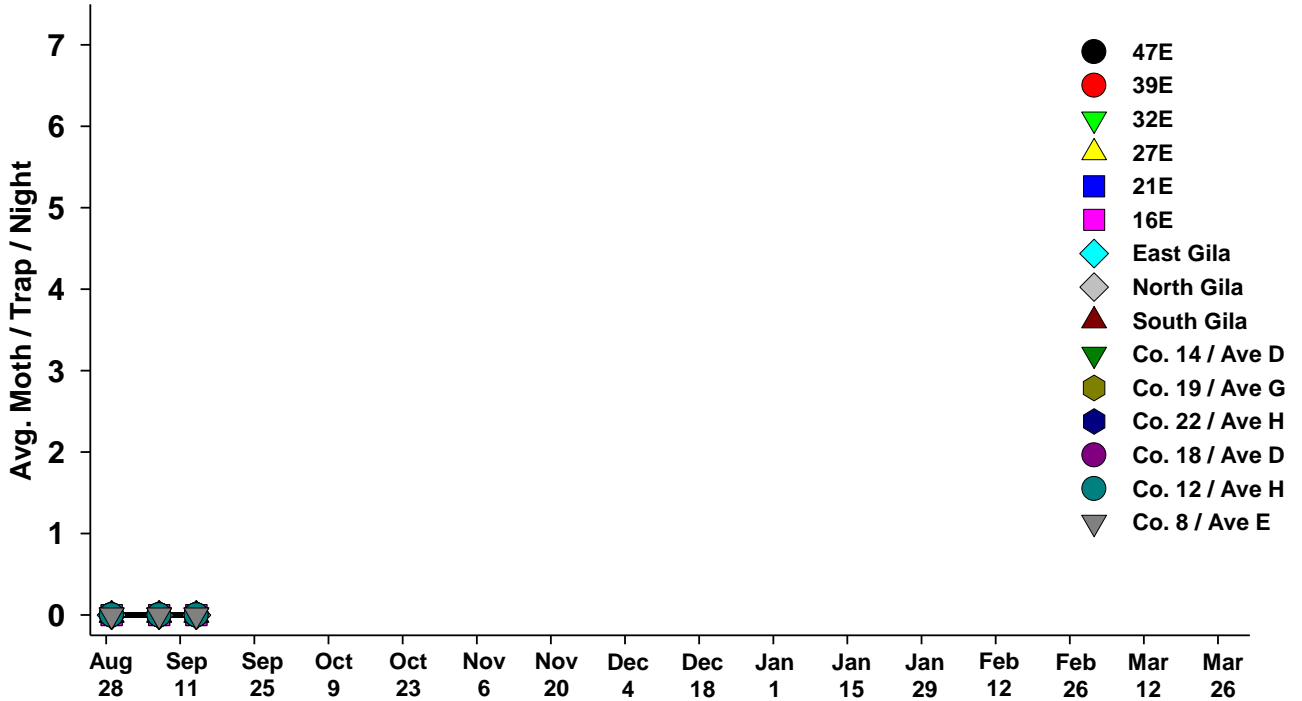
## 10 Year Average

Cabbage looper Moths / Trap / Night (Avg. of 15 trap locations)



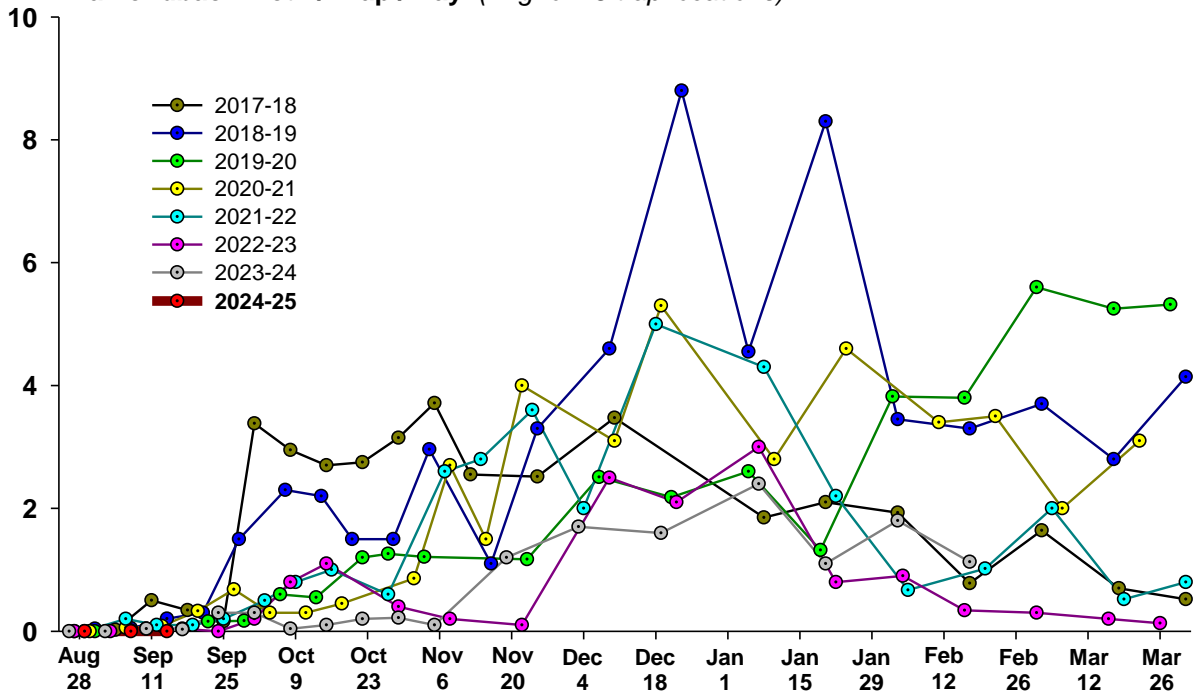
## 2023-2024

### Diamondback Moth

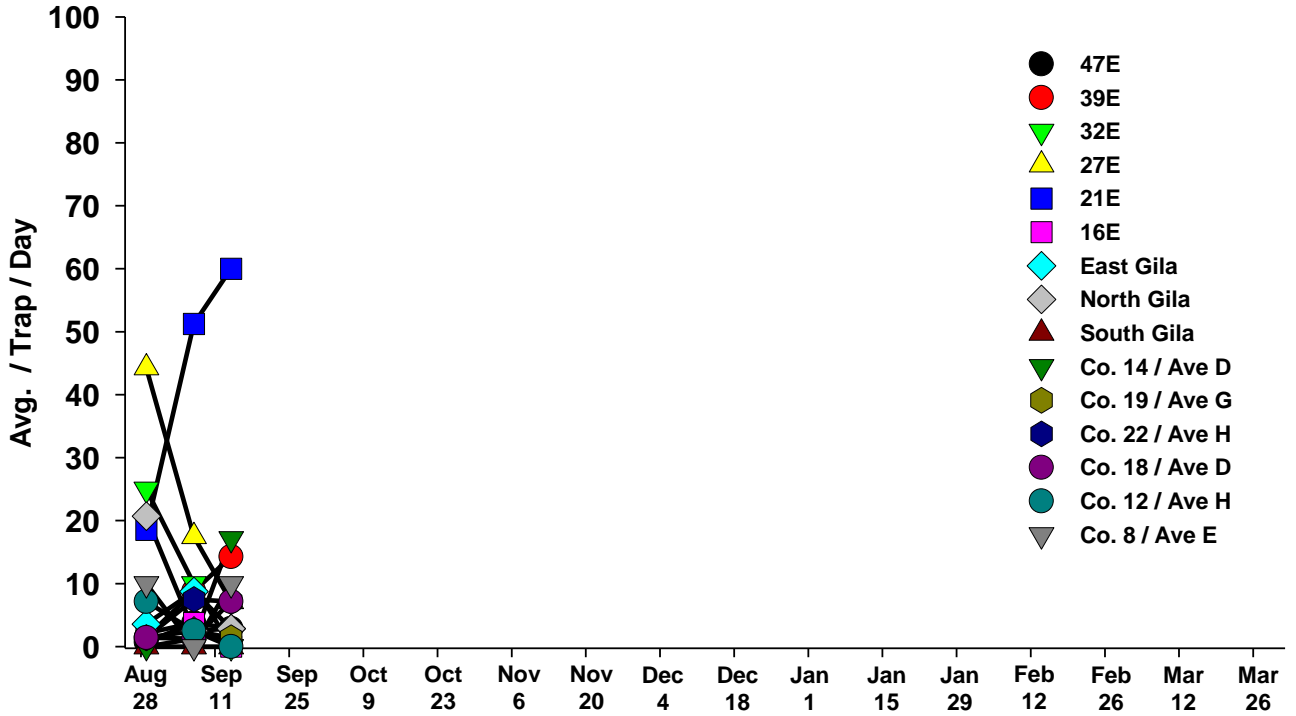


### 8 Year Average

Diamondback moth / Trap / Day (Avg. of 15 trap locations)

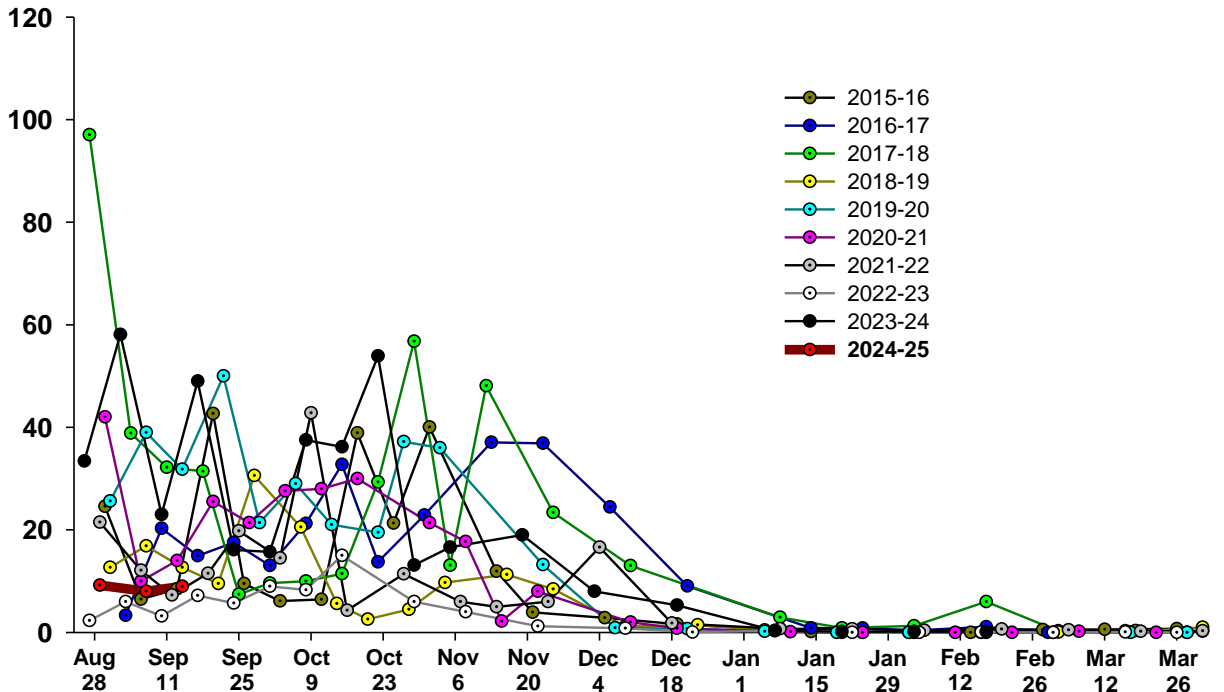


## Whiteflies



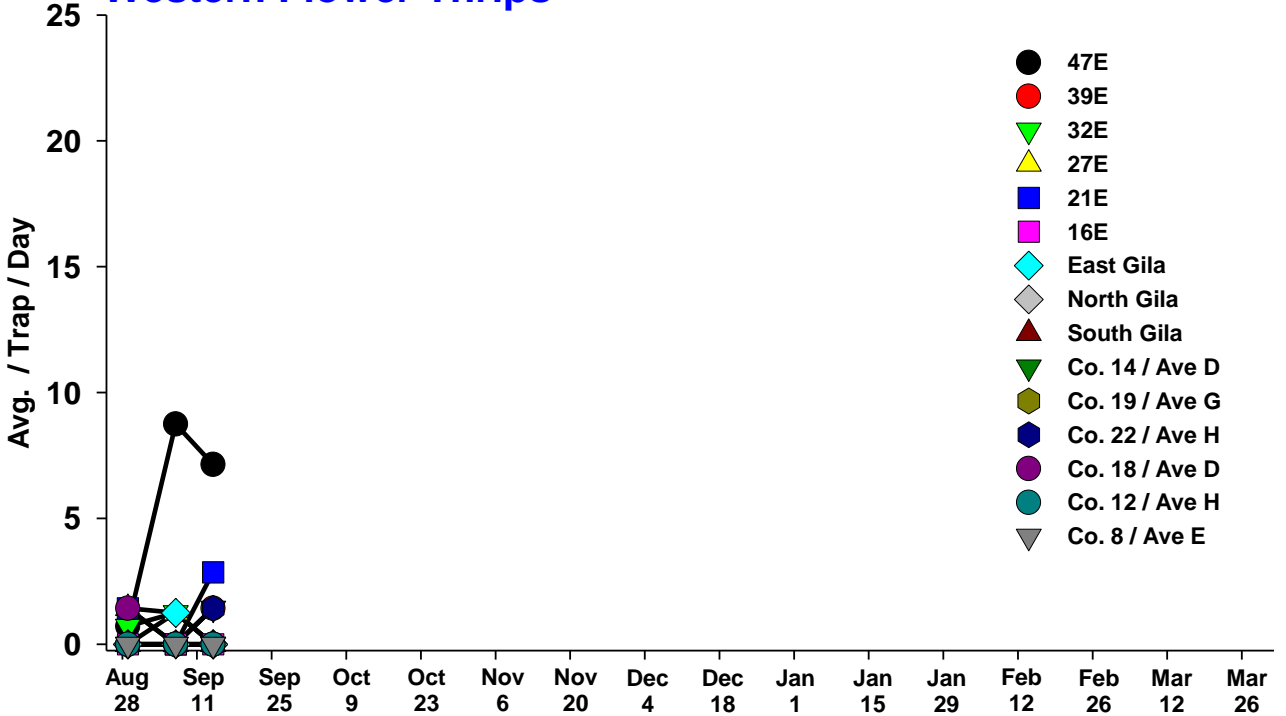
## 10 Year Average

Whiteflies / Trap / Day (Avg. of 15 trap locations)



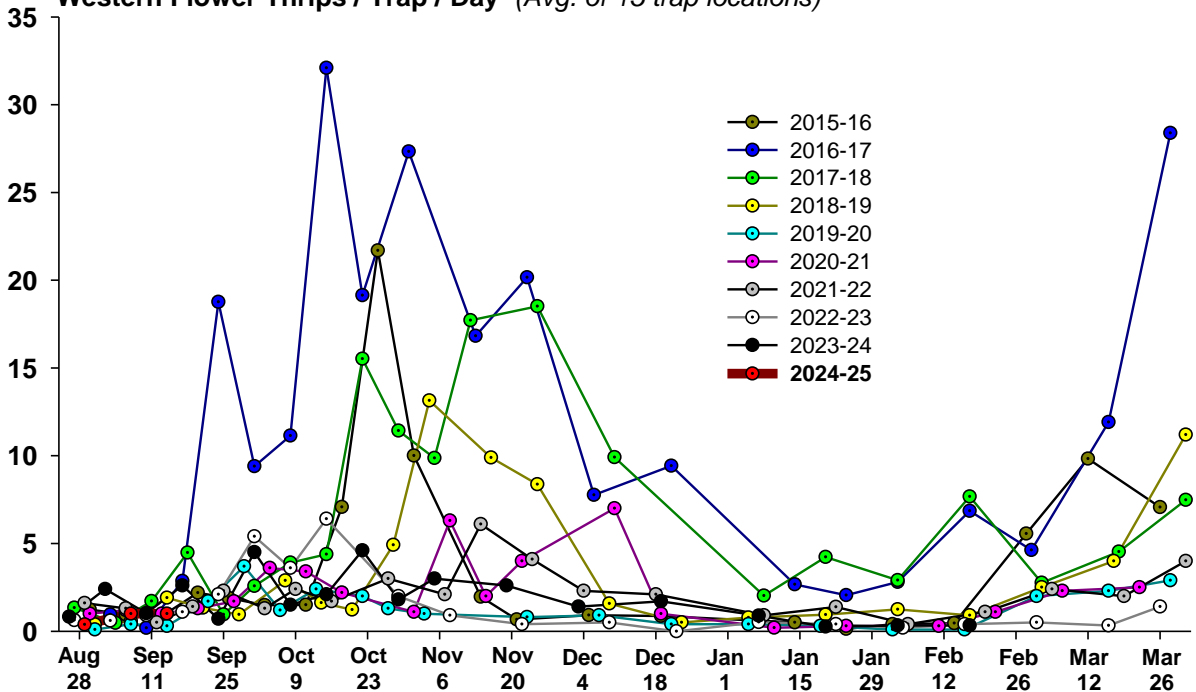
## 2023-2024

### Western Flower Thrips



### 10 Year Average

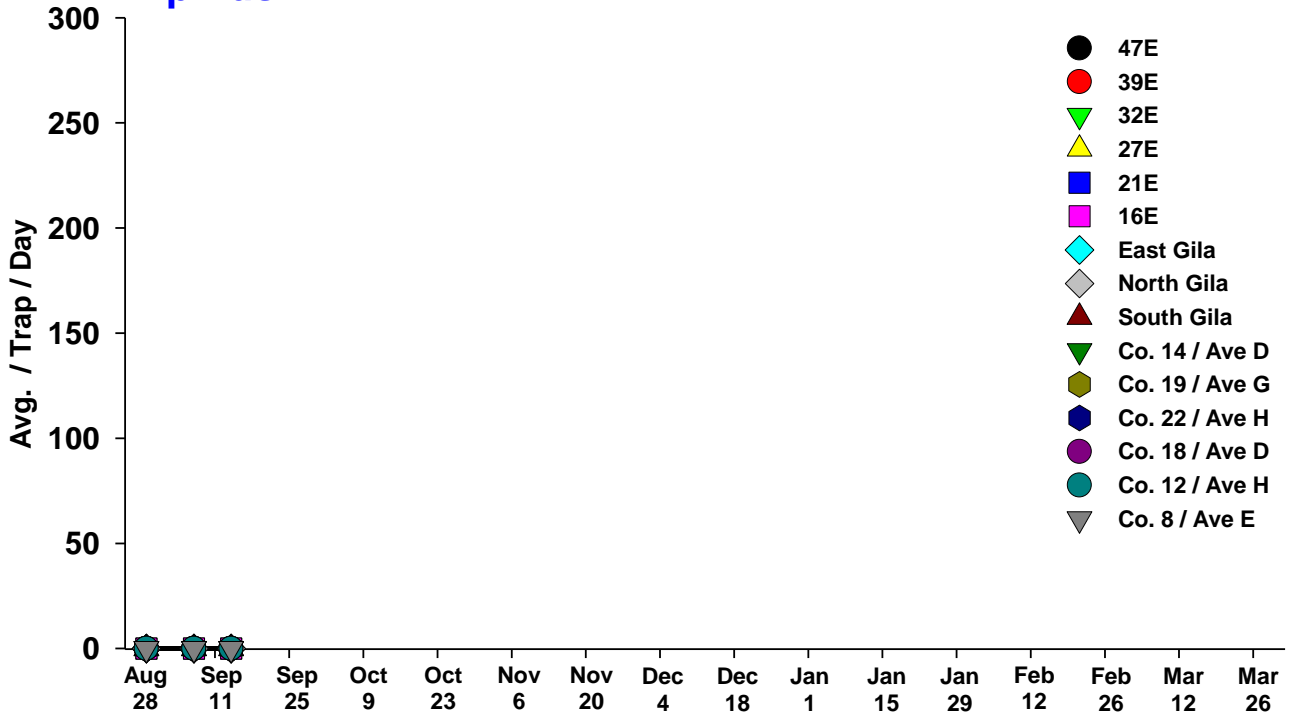
Western Flower Thrips / Trap / Day (Avg. of 15 trap locations)





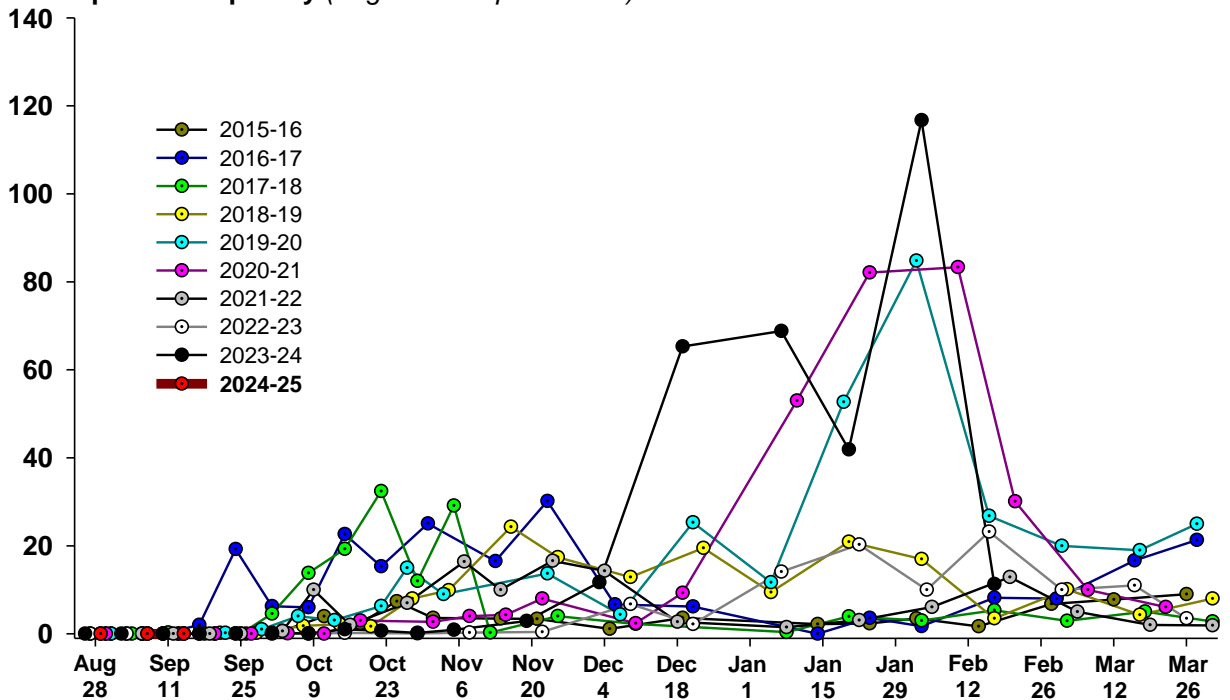
## 2023-2024

### Aphids



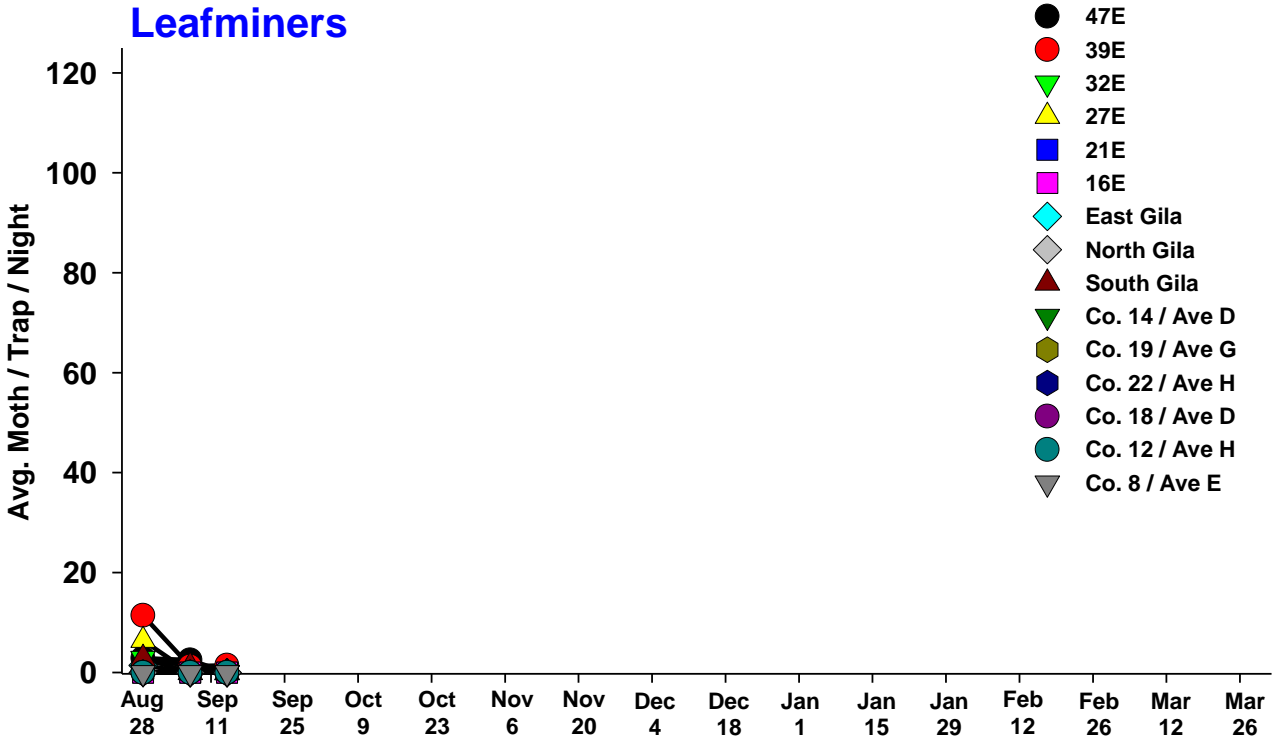
### 10 Year Average

Aphids / Trap / Day (Avg. of 15 trap locations)



# 2023-2024

## Leafminers



## 10 Year Average

Leafminer / Trap / Day (Avg. of 15 trap locations)

